

NISSUI

Simple and Easy Dry Media for Microbial Count and Detection

Compact Dry "Nissui"

TC/CF/EC/SA/VP/YM/SL

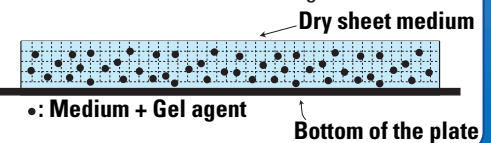
There are 7 kinds of unique dry medium for hygienic testing and detection of food poisoning bacteria.

Features

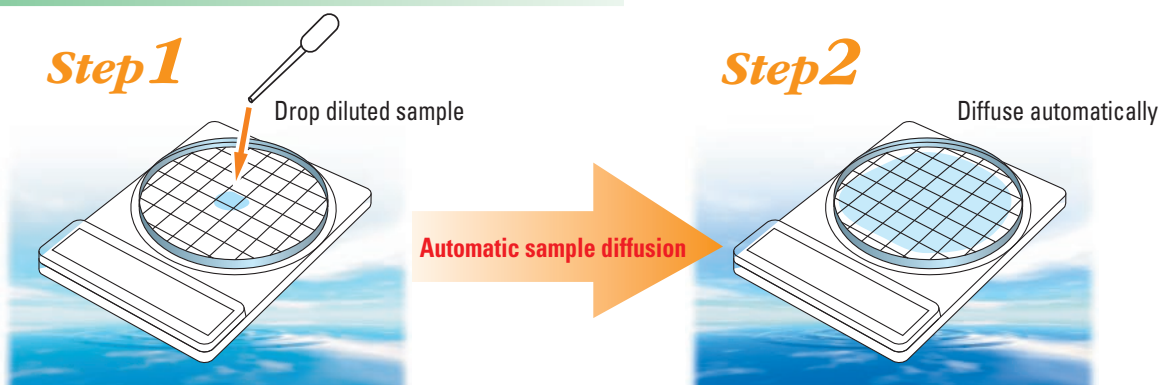
- Small and compact dry media (sterilized)
- Sample diffuses automatically and evenly into the plate
- Clear color development by chromogenic substrates
- Good correlation with conventional method (mixing and dilution culture)
- Colony fishing is very easy
- Compact Dry TC, CF, EC, and YM have AOAC PTM (Performance Tested Methods) certificate, and Compact TC has also MicroVal certificate (European validation and certification alternative methods according to ENEN ISO 16140).

Principle of Automatic Sample Diffusion

Once a liquid sample dropped, it diffuses automatically into the plate, and the dry coated medium transforms to gel.



Operating Procedure



NISSUI PHARMACEUTICAL CO., LTD.

Simple and Easy Dry Media for Microbia

For Total Viable Count Medium

AOAC

MicroVal

TC : Total Count

Compact Dry "Nissui" TC

Colonies grown on Compact Dry "Nissui" TC are Red color.

Feature

The medium consists of non-selective medium and redox indicator of 2,3,5-Triphenyl Tetrazolium Chloride (TTC). Most colonies grown on TC are Red color.

Interpretation

Incubate 48 hours at $35 \pm 2^\circ\text{C}$.

Count all colonies grown on the plate.



For Coliform

AOAC

CF : Coliform

Compact Dry "Nissui" CF

Coliform colonies grown on Compact Dry "Nissui" CF are Blue/Blue Green color.

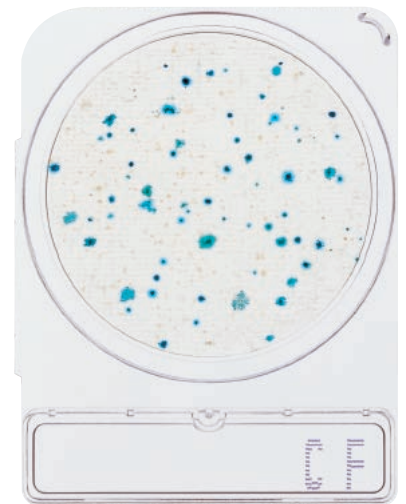
Feature

Coliform grow to develop Blue/Blue Green colonies as the medium contains chromogenic enzyme substrate X-GAL. Bacteria other than Coliform are inhibited to grow, and they do not form any colored colonies even if they grow on the medium.

Interpretation

Incubate 24 hours at $35 \pm 2^\circ\text{C}$.

Count all Blue/Blue Green colored colonies as Coliform.



For Coliform and *Escherichia coli*

AOAC

EC : *E.coli*, Coliform

Compact Dry "Nissui" EC

Colonies grown on Compact Dry "Nissui" EC are distinguished by Blue/Blue Purple color for *E. coli* and by Red/Pink color for other Coliform than *E. coli*.

Feature

Medium contains two kinds of chromogenic enzyme substrate, Magenta-GAL and X-GLUC. Red/Pink colonies for other coliform than *E.coli* while Blue/Blue Purple color for *E. coli* are observed respectively.

Interpretation

Incubate 24 hours at $35 \pm 2^\circ\text{C}$.

For *E. coli*, count all Blue/Blue Purple colonies. Combined total number of both colonies of Red and Blue is the total number of Coliform group.



For *Staphylococcus aureus*

SA : *Staphylococcus aureus*

Compact Dry "Nissui" SA

Staphylococcus aureus is easily distinguished by Egg Yolk reaction from other *Staphylococcus* grown.

Feature

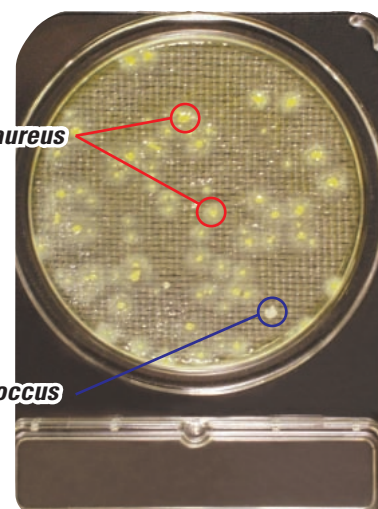
Staphylococcus aureus generates Yellow pigment to develop light Yellow colonies, and also decomposes the lipid-protein complex of egg yolk by its enzyme, which changes the peripheral medium around the colonies to white turbid (Egg Yolk reaction).

Interpretation

Incubate 48 hours at $35 \pm 2^\circ\text{C}$ after dropping egg yolk suspension. Count colonies whose peripheral media are white turbid.

Staphylococcus aureus

other *Staphylococcus*



For *Vibrio parahaemolyticus*

VP : *Vibrio parahaemolyticus*

Compact Dry "Nissui" VP

V. parahaemolyticus develops Blue colonies, as the medium contains a specific chromogenic substrate.

Feature

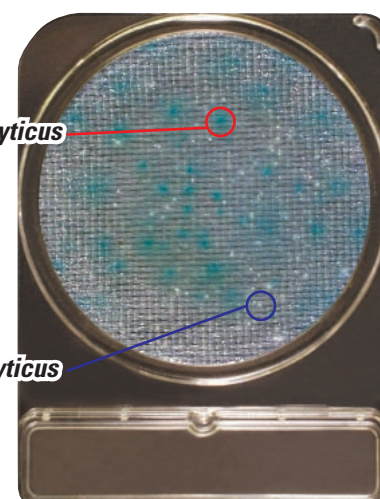
Colonies grown on VP plate are distinguished by blue/blue-green color for *V. parahaemolyticus* and by red/pink color for *V. cholerae*, *V. mimicus*, *V. vulnificus* and by milk-white color for other *Vibrio* spp. as *V. alginolyticus*.

Interpretation

Incubate 18-20 hours at $35 \pm 2^\circ\text{C}$. Count all Blue/Blue Green colored colonies as *V. parahaemolyticus*.

V. parahaemolyticus

V. alginolyticus



For Yeast and Mold

AOAC

YM : Yeast, Mold

Compact Dry "Nissui" YM

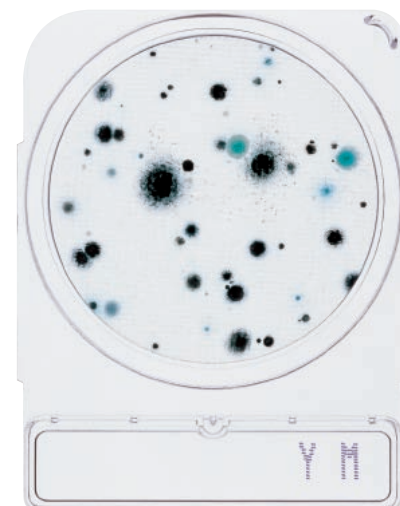
Yeast and Mold grown selectively on the medium forms cottony colonies with characteristic color.

Feature

Medium contains chromogenic enzyme substrate X-Phos that develops blue color for most of yeast (the other yeast does not generate Blue color), and antibiotics that inhibit the growth of bacteria. Mold forms the cottony colonies with characteristic color.

Interpretation

Incubate 3-7 days at $20-25^\circ\text{C}$. Count Blue or White to Cream color for yeast, mold forms the cottony colonies with characteristic color.



For *Salmonella* Detection

SL : *Salmonella* spp.

Compact Dry "Nissui" SL

The media detects *Salmonella* qualitatively on its specific characters, biochemical reactivity and motility.

Feature

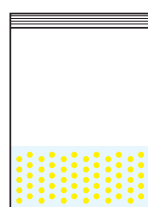
Salmonella in the specimen is distinguished by the combination of different three test principles, alkalization of the medium by *Salmonella*'s lysine decarboxylase ability (medium color will change Blue-purple to Yellow), changed colony color to Green by chromogenic substrate (Black colonies are generated by hydrogen sulfide producing *Salmonella*) and motility of *Salmonella*.



Operating Procedure: Compact Dry "Nissui" SL

1. Sample preparation

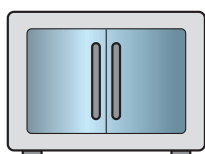
Sample 25g
+
EEM Broth or BPW 225mL



Homogenize Bag

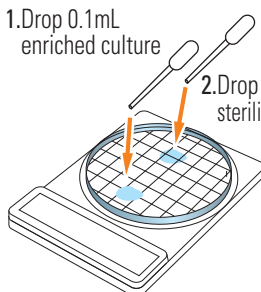
2. Pre-Enrichment

35-37°C, 20-24 hours



3. Inoculation on SL

1. Drop 0.1mL enriched culture
2. Drop 1mL sterilized water

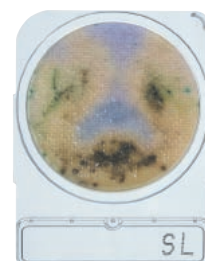


4. Incubation

41-43°C, 20-24 hours



5. Interpretation



Compact Dry Product Line:

Available For	Name of Product	Code	Package	Storage	Shelf life
Total Viable Count	Compact Dry TC	06740	40 plates	R.T.(1-30°C)	18 months after manufacturing
		06741	240 plates		
Coliform	Compact Dry CF	06744	40 plates		
		06745	240 plates		
<i>E. coli</i> and Coliform	Compact Dry EC	06742	40 plates		
		06743	240 plates		
<i>Staphylococcus aureus</i>	Compact Dry SA Plate	06734	40 plates		
		06735	240 plates		
<i>Vibrio parahaemolyticus</i>	Compact Dry VP	06748	40 plates		
		06749	240 plates		
Yeast and Mold	Compact Dry YM	06746	40 plates		
		06747	240 plates		
<i>Salmonella</i> Detection	Compact Dry SL	06732	40 plates		
		06733	240 plates		

Other related products:

Available For	Name of Product	Code	Package	Storage	Shelf life
Egg yolk reaction	Compact Dry SA Egg Yolk Suspension	06736	40 samples	Cool(4-10°C)	10 months after manufacturing
Sample collection	Easy Wiping Kit	06738	200 swabs	R.T.(1-30°C)	-

Further Information:

Customer Support Section, Nissui Pharmaceutical Co., Ltd.

TEL: +81-3-5846-5707 / FAX: +81-3-5846-5629

E-mail: customer@nissui-pharm.co.jp

MicroVal

***The first certificate
for Compact Dry TC***

*European validation and certification alternative methods
according to EN ISO 16140*